



LA BREA INDUSTRIAL DEVELOPMENT
COMPANY LIMITED


Environmental Report



La Brea Industrial Development Company
Limited
2024

Contents

Port Profile	3
Environmental Report	5
Environmental Aspects and Legal Requirements	6
Responsibilities and Resources	8
Stakeholder Engagement and Communication	9
Conformity Review	10
Environmental Objectives and Actions	12
Conclusion	15
Contact	15

Contacts	Terrance Boodoosingh, Operations Manager Phone: +1 (868) 346-6447 Email: t.boodoosingh@ngc.co.tt
Who We Are 	<p>La Brea Industrial Development Company Limited (LABIDCO) was formed in February 1995 to develop the La Brea Industrial Estate for industrial activity.</p> <p>The Company's principal business is the promotion, development, and management of the La Brea Industrial Estate and the Port of Brighton in support of energy sector development.</p> <p>The National Gas Company of Trinidad and Tobago Limited (NGC) has 91.55% shareholding in LABIDCO and the Petroleum Company of Trinidad and Tobago Limited (PETROTRIN) holds the remaining 8.45%.</p>
Vision	To be recognized as the premier green and smart port and industrial estate that supports the needs of the energy, transportation, and manufacturing sectors in the region.
Mission	To leverage synergies of the NGC Group, strategic partnerships, innovation, entrepreneurship, and people diversity for the achievement of a greener, sustainable tomorrow.
Values	<ul style="list-style-type: none"> • Safety and Environmental Preservation • Integrity • Employee Engagement • Excellence • Transparency • Customer Focus • Corporate Social Responsibility
What We Do	<p>LABIDCO offers port and estate facilities for:</p> <ul style="list-style-type: none"> • Leased land • Bioremediation and waste disposal services • Import/export of petrochemicals, general and project cargo • Logistics Services • Open and covered storage • Large-scale fabrication services (dockyard)

Port Profile

Port Location & Area

The Port of Brighton is an ISPS-certified, multi-berth user facility located in La Brea, Trinidad. It serves as a crucial logistics hub for the energy, manufacturing, and transportation sectors, providing services to both the local and international markets. The port is managed by La Brea Industrial Development Company Limited (LABIDCO) and plays a vital role in supporting regional economic activities.

Table 1: Port Information

Port location	Latitude 10°15'N – Longitude 61°38'W
Time zone	Atlantic Standard time (GMT-4)
Anchorage Position	Latitude 10°16'17"N – Longitude 61°39'85"W
Geographic setting	Engineered coastline
Area of port's land	266500m ²
Area of Port's navigable water	452774 m ²
Total quayage	721m
Maximum draught	12.8m
Tidal range	1.0m
Turning basin	500m
Length of channel	650m
Number of berths	3
Length, largest vessel	190m
Draught, largest vessel	11.8m



Figure 1: Aerial view of Port of Brighton looking Northeast to Southwest

La Brea Industrial Development Company Limited		Policy #: LAB/HSE/0004/2022
Environmental Sustainability Policy Statement		
Approved By:	Effective Date: 2022 October 31	Version No. 1 Revision No. 0

Environmental Sustainability Policy Statement

La Brea Industrial Development Company Limited (LABIDCO) is committed to the continuous improvement of its environmental performance, through constant review, to provide an effectively controlled environmental management system and service.

Through this policy, LABIDCO commits to managing its obligations to the environment responsibly, and to develop its business to meet the needs of our stakeholders in a manner that has due regard to sustainable development both for its business and the environment which addresses the requirements of ISO 14001.

Our commitment is to:

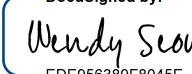
- Comply with all applicable local and international environmental laws, regulations, and other requirements to continuously improve our environmental performance.
- Integrate recognised environmental management best practices into our business operations and increase the use of environmentally acceptable materials, equipment and technology to mitigate and minimize the environmental impact, for the life cycle of physical assets under our control.
- Protect the environment in all aspects of our business to prevent any adverse environmental effect. Implement effective pollution prevention and waste minimization programs to reduce, reuse, and recycle materials where practical and maintain a high level of preparedness and respond in an appropriate and timely manner to any incident or emergency that may impact the environment.
- Incorporate the United Nation's 2030 Sustainable Development Goals, together with Environment, Social and Governance (ESG) considerations into our strategic planning, especially those identified as material to LABIDCO's operations, showing related indicators and targets.
- Take action to reduce the carbon footprint of our business activities as we aim to be a Green and Smart Port, doing our part to assist in meeting the NGC Group and nationally determined targets.
- Communicate to all our stakeholders on our environmental performance and participate in the advancement and promotion of environmental solutions wherever possible, in partnership with government and other key stakeholders.
- Review this Policy regularly (every three years).

Let us ensure that all environmental policies and procedures are developed and implemented and monitored for continuous improvement, the establishment of measurable objectives and targets aimed at the elimination of waste, pollution and environmental harm and, consultation and co-operation among employees and stakeholders in matters which may affect or impact the environment is encouraged.

Adherence to this policy is the responsibility of the management, employees, and stakeholders of LABIDCO.

10/31/2022

Date

DocuSigned by:

 EDE956389F8045E...

Wendy Seow
General Manager

Environmental Report

Purpose of the Environmental Report

The Environmental Report provides an overview of LABIDCO's environmental performance over the reporting period. It is designed to inform stakeholders—including the local community, regulators, tenants, contractors, and employees—about the port's environmental management efforts and the progress made toward achieving its environmental objectives.

This report is aligned with LABIDCO's commitment to transparency and sustainability, ensuring that all stakeholders are aware of the measures being taken to mitigate environmental impacts and enhance operational sustainability. LABIDCO aligns its initiatives with Trinidad and Tobago's National Development Strategy and the United Nations Sustainable Development Goals (SDGs), ensuring transparency and sustainability in all operations.

Key Elements of the Environmental Report

Port Activities and Environmental Impact :

LABIDCO's Port of Brighton is engaged in diverse operations, including the handling of dry bulk, liquid bulk, and general cargo, as well as shipbuilding and repair activities. These activities have the potential to impact air and water quality, noise levels, and waste generation. The port is committed to minimizing these impacts through proactive environmental management.

Environmental Policy:

LABIDCO's environmental policy is centered on compliance with local and international environmental laws, reducing pollution, and integrating sustainability into port operations. The port is focused on preventing adverse environmental effects, minimizing waste, reducing energy consumption, and implementing renewable energy solutions.

Environmental Aspects and Legal Requirements

LABIDCO's Port of Brighton is committed to understanding and managing the environmental impacts associated with its operations. This section outlines the environmental aspects related to port activities, the legal framework governing these activities, and the indicators used to monitor and improve performance.

Environmental regulations

The Port of Brighton operates under a regulatory framework to ensure environmental protection and sustainability. Key national environmental laws and international conventions relevant to the port's activities are presented below.

Table 2: National Environmental Laws and Regulations

Law	Aim of the Law	National Authority	Local Enforcement Agency
Environmental Management Act, Chapter 35:05	Establishes a framework for environmental protection, conservation, and sustainable use	Ministry of Planning and Development	Environmental Management Authority (EMA)
Certificates of Environmental Clearance (CEC) Rules (2001)	Requires CECs for activities likely to impact the environment, with provisions for EIAs	Ministry of Planning and Development	Environmental Management Authority (EMA)
Water Pollution Rules (amended 2019)	Regulates discharges into water bodies to protect water quality and marine resources	Ministry of Planning and Development	Environmental Management Authority (EMA)
Air Pollution Rules (2014)	Controls emission levels of air pollutants, including particulate matter, SO ₂ , and NO _x	Ministry of Planning and Development	Environmental Management Authority (EMA)
Waste Management Rules	Provides guidelines for the safe handling, storage, and disposal of hazardous and non-hazardous waste	Ministry of Planning and Development	Environmental Management Authority (EMA)

Table 3: International Conventions

Convention	Objective	Corresponding Local Legislation
MARPOL (International Convention for the Prevention of Pollution from Ships)	Aims to prevent pollution of the marine environment by ships from operational or accidental causes	Compliance under EMA regulations for port and shipping operations
United Nations Sustainable Development Goals (SDGs)	Provides global goals for sustainable development, including climate action and responsible production	Integrated within national policies on sustainable development
World Ports Sustainability Program (WPSP)	Promotes sustainable port practices and industry leadership in environmental stewardship	Adoption and alignment through EMA and national sustainability goals



Responsibilities and Resources

LABIDCO's environmental management structure is designed to ensure accountability, effective implementation of environmental practices, and compliance with environmental regulations. This section describes the organization's environmental responsibilities, key personnel involved, and the resources allocated to support these efforts.

Environmental management organization structure

The environmental management structure at LABIDCO's Port of Brighton includes the following key roles and departments, which work together to implement, monitor, and improve the port's environmental performance.

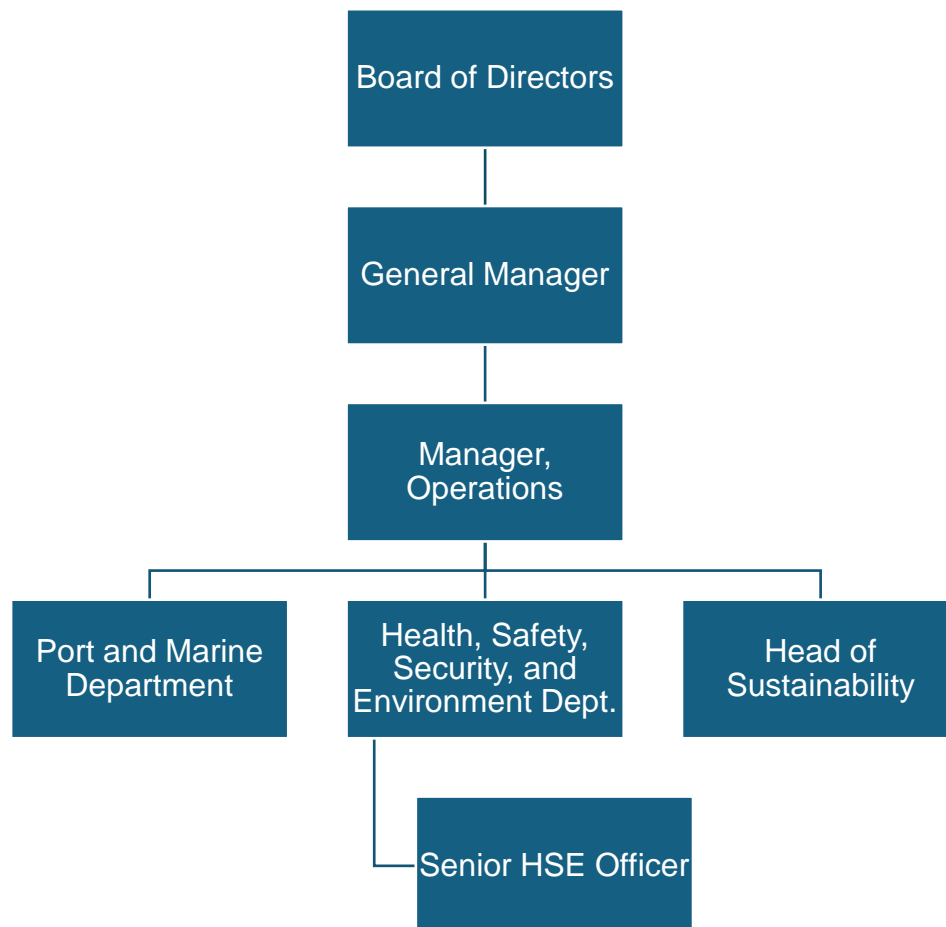


Figure 2: Organizational structure of LABIDCO

Stakeholder Engagement and Communication

LABIDCO places great emphasis on engaging its stakeholders—including tenants, contractors, employees, and the local community—in its environmental management efforts. Regular focus group meetings, one-on-one discussions, and public consultations are held to ensure transparency and address any concerns raised by the community.

Regular tenant meetings are conducted to provide updates on environmental initiatives, review compliance with port regulations, and address any specific concerns tenants may have regarding port operations. Tenants are encouraged to adopt sustainable practices within their operations, contributing to the port's overall environmental objectives.

For vessel operators, LABIDCO ensures they are informed of all environmental and safety protocols required during port entry, berthing, and departure. Through consistent communication and operational guidelines, the port minimizes environmental risks associated with vessel activities.

LABIDCO also maintains an open line of communication with regulatory bodies, including the Environmental Management Authority (EMA) and other statutory agencies. The port submits regular environmental reports and compliance documentation to these authorities to verify ongoing adherence to environmental regulations and legal standards.

The table below provides an overview of stakeholder needs, expectations, and methods of engagement.

Table 4: Needs/ Expectations of stakeholders and engagement

Stakeholders	Needs/Expectations	Engagement
Statutory/Regulatory Bodies	Compliance, well-managed, sustainable and safe operations Protection and enhancement of biodiversity	Regular meetings and submission of required documentation
Tenants	Safe working environment, efficient infrastructure and access, engagement on Estate activities	Emails, meetings, phone calls, notices
Vessel Operators	Safe and efficient access to the port, potable water supply	Operational guidelines, emails, phone calls

Suppliers	Safe working environment, engagement on Estate activities	Emails, meetings, phone calls, notices
Contractors	Safe working environment, engagement on Estate activities	Emails, meetings, phone calls, notices
Port Customers	Safe and efficient operations and access to facilities	Emails, phone calls, website
Fence Line Community	Environmentally safe and sustainable operations with minimal disruption to the environment. Transparency, opportunities for employment	Focus group/ one-on-one meetings, Phone calls, Emails, website
Employees	Safe working environment	Emails, staff meetings, phone calls

Conformity Review

The conformity review process at LABIDCO's Port of Brighton is designed to ensure that the port's operations remain compliant with both its internal environmental policy and the national and international legislation. This review is conducted on an annual basis, with the objective of identifying areas of non-compliance and opportunities for continuous improvement.

The environmental performance review assesses the progress of LABIDCO's port in meeting the environmental objectives outlined in its environmental policy. Key performance indicators (KPIs) are used to measure the port's success in minimizing environmental impacts across various activities.

Environmental Aspect	Objective	Performance Indicator	Results	Conclusion
Air Quality	Maintain particulate matter / inorganic levels within allowable levels	Compliance with Air Quality Standards	Results show levels remain within regulatory limits.	Continuous monitoring to ensure compliance
Water Pollution (e.g. effluent)	Maintain water quality by reducing effluent discharge	Compliance with Water Pollution Rules	Water quality parameters within limits; no significant pollution incidents reported	Continue current monitoring practices.

Energy Efficiency	Reduce energy consumption by % in port operations	Energy consumption per year	5% reduction achieved compared to prior year.	Additional energy-saving initiatives needed to meet the target.
--------------------------	---	-----------------------------	---	---

Review of Legal Compliance

LABIDCO ensures compliance with the following key regulations:

Certificates of Environmental Clearance (CEC) Rules (2001):

- All projects and significant activities at the port have been screened and certified as per the CEC requirements. No major violations or non-compliance have been recorded.

Water Pollution Rules (2001, amended 2019):

- The port's wastewater discharge complies with the Water Pollution Rules, and regular monitoring ensures that no harmful pollutants exceed permissible limits.

Air Pollution Rules (2014):

- The port's emissions are monitored in accordance with the Air Pollution Rules.



Waste Management Rules:





- LABIDCO complies with the Waste Management Rules, maintaining proper documentation and disposal of both hazardous and non-hazardous waste. Improvements in waste segregation have been identified as a priority.

Environmental Objectives and Actions

LABIDCO is dedicated to advancing its environmental management practices to support sustainable port operations and align with national and global environmental goals. The table below highlights some of these sustainability initiatives:

Sustainability Initiatives:

United Nation Sustainable Development Goal (SDG)	Action	Description
SDG 7 	Renewable Energy System	LABIDCO has developed a renewable energy roadmap for the Port of Brighton to establish a low-carbon energy supply system. A project to develop a renewable energy system was drafted and implementation is expected by Q1 2025.
	Solar Lighting	Installation of 100 solar lights on the facility has led to a reduction of approximately 83,445 kg of CO ₂ emissions as of October 2024.
	Energy-Efficient Lighting	LABIDCO has upgraded its lighting at the Head Office to LED with time-controlled and motion-sensor systems to reduce energy consumption.
SDG 9 	Waste Management Plan	LABIDCO is developing a waste management plan for the La Brea Industrial Estate and the Port of Brighton. This plan will include sustainable waste treatment options, recycling, recovery, and potential revenue-generating opportunities, inclusive of a port reception facility in alignment with MARPOL Annex V. The goal is to enhance environmental responsibility and cost-effectiveness in waste management.

SDG 11 	Community Capacity Building	<p>Through its Corporate Social Responsibility (CSR) strategy, LABIDCO promotes local sustainability by supporting educational, sports, and community development projects, focusing on youth and capacity building within the fence-line community.</p>
SDG 13 	Greenhouse Gas (GHG) Inventory	<p>In 2023, LABIDCO completed its first GHG Inventory considering all aspects of the port, including data on emissions from vessels while anchored, maneuvering, and berthed at the Port of Brighton. This inventory has informed an emissions reduction strategy, with ongoing progress in implementing its recommendations.</p>
	Carbon Sequestration Program	<p>LABIDCO's "Plant for a Purpose" initiative has led to the planting of 581 trees in the La Brea Industrial Estate to support Trinidad and Tobago's Nationally Determined Contributions (NDCs) of reducing carbon emissions by 15% by 2030. These trees are planted on land unsuitable for industrial use, contributing to biological carbon sequestration.</p>
SDG 14 	Climate Change Vulnerability Study	<p>LABIDCO intends to conduct a study in 2025 to assess the port's vulnerability to climate change impacts. This baseline assessment will guide future operational adjustments to ensure climate resilience in port management.</p>
SDG 17 	Collaborations with Industry Stakeholders	<p>LABIDCO maintains partnerships with industry stakeholders to advance its sustainability objectives. This collaboration allows LABIDCO to leverage expertise and resources to address environmental challenges effectively.</p>

Planned Projects

- **Expansion of Renewable Energy Use**

LABIDCO will conduct a feasibility study in early 2025 to assess solar energy integration across port operations. This initiative will identify optimal locations, energy output potential, and implementation strategies to expand renewable energy use, thereby reducing the port's reliance on conventional energy sources and minimizing greenhouse gas emissions.

- **Investment in Advanced Technologies**

To support its vision of becoming a "Green and Smart Port," LABIDCO plans to invest in advanced environmental technologies. This includes acquiring state-of-the-art pollution control systems, energy-efficient equipment, and digital solutions for environmental monitoring. These technologies will enable real-time data tracking, improved compliance, and a proactive approach to managing environmental risks.

- **Carbon Footprint Reduction**

LABIDCO is committed to reducing its carbon footprint by continuing investments in energy efficiency, conservation, and carbon mitigation projects including the replanting of mangroves along the coastline of the Port. This activity will assist in the protection marine biodiversity and ecosystems as well as aid in the stabilization of the shoreline. LABIDCO will also explore carbon offset programs and partnerships to support broader carbon reduction targets aligned with Trinidad and Tobago's Nationally Determined Contributions (NDCs).

- **Waste Management Optimization**

Building on its current waste management framework, LABIDCO will finalize and implement a waste management plan aimed at maximizing recycling, reducing waste generation, exploring circular waste strategies and exploration of the establishment of a port reception facility in alignment with MARPOL Annex V. This plan will position the port as a leader in sustainable waste management within the region.

- **Climate Change Resilience Planning**

In alignment with the upcoming Climate Change Vulnerability Study, LABIDCO will develop, and initiate resilience strategies tailored to potential climate impacts. These strategies will integrate climate adaptation measures into port infrastructure, emergency

response, and operational planning to ensure LABIDCO's long-term sustainability and preparedness against climate-related risks.

LABIDCO's commitment to continuous environmental improvement will support its mission to be an industry leader in sustainable port operations. Through targeted investments, stakeholder engagement, and strategic initiatives, LABIDCO aims to enhance its environmental stewardship, aligning with both national sustainability goals and global standards.

Conclusion

LABIDCO's Port of Brighton is committed to operating in an environmentally responsible manner. Through continuous monitoring, stakeholder engagement, and investment in sustainability initiatives, the port is actively reducing its environmental footprint while supporting economic growth in the region.

The port remains transparent about its environmental performance and will continue to report on its progress to ensure that it meets both regulatory requirements and stakeholder expectations.

Contact

La Brea Industrial Development Company Limited
Estate Corridor Road Extension
Brighton Port
Material Storage & Handling Facility
La Brea Industrial Estate
Brighton
La Brea

+1 868 648-8488/ +1 868 648-8884

Email - info.labidco@ngc.co.tt